

DIFFUSION MEDIA CC-600 G

- **FINAL FILTRATION BARRIER** to paint damaging particles from the air intake stream
- **UL CLASS 1** and self extinguishing according **DIN 53438-F1**
- **100% ADHESIVE SATURATION FOR MAXIMUM PROTECTION**
- **R0 RATING ON PARTICLE MIGRATION**
- **HIGH TEMPERATURE RESISTANT SCRIM** up to 180°C
- **QUALITY ASSURANCE DIN CERTCO REGISTRATION NUMBER**

DESCRIPTION

Fine air filtration media specifically designed to be used in down-draft paint spray booths as the final filtration barrier to all paint damaging particles from the intake air stream. This ceiling filter or diffusion media ensures a uniform air distribution and an all round laminar flow throughout the spray booth when applied in auto assembly plants and auto refinishing facilities as well as in the repair after markets.

Synthetic fiber-based filter media developed and manufactured at Filtrair's high-tech media plant based in The Netherlands. The filter media is constructed from selected high performance, nonbreakable fibers in a progressive density multi-layering technique allowing high depth loading to ensure high dust holding capacity with optimal lowest pressure drop performance. This media is thermally bonded and impregnated in full depth with a special tackifier coating to prevent any release of fibers and migration of paint damaging particles larger than 5 microns due to vibration in the system, even under varying temperature conditions.

CC-600 G is classified as R0 in accordance with the Filtrair migration test (see back page). This results in high fractional efficiency combined with a high dust loading capacity, a long filter life as well as low energy and maintenance costs.

HIGH TEMPERATURE SCRIM

The clean air side is particularly dense and smoothed. It is reinforced with a high temperature resistant and supporting

woven open-mesh scrim. The temperature resistance of this special scrim is up to 180°C to prevent any discoloration.

FLAMMABILITY RATINGS

Filtrair CC-600 G conforms to German fire classification standards (DIN 53438-F1) and is self-extinguishing. It is resistant to evaporated solvents and manufactured in a 100% silicone-free environment.

QUALITY ASSURANCE

Constant quality is assured by independent quality control testing according to ISO 16890 and by DIN CERTCO. The DIN-Logo with Filtrair's registration number PFE035/17, the filter class and the Filtrair Logo with Brand Name are all imprinted on the media.

FEATURES AND BENEFITS

- **APPROVED BY MAJOR AUTOMOTIVE MANUFACTURERS** so it can be used with complete confidence.
- **FULL PENETRATION OF SPECIAL ADHESIVE** prevents any release of fibers and migration of particles larger than 5 microns.
- **GRADIENT DENSITY STRUCTURE** ensures a uniform air distribution and a laminar flow throughout the spray booth.
- **APPROVED ACCORDING DAIMLER-CHRYSLER AND VOLKSWAGEN LACQUER TEST SPECIFICATIONS** by IPA Fraunhofer Institute.

APPLICATIONS

This top quality Filtrair ceiling or diffusion media is specially designed to be used in the ceiling of paint spray facilities in auto assembly plants and down draft spray cabins of auto refinishing facilities as well as in paint spray booths of the repair after markets.

This media enhances a very uniform air distribution and an optimal laminar air flow. Further, it acts as the final filtration barrier to paint damaging particles from the air stream which is an absolute requirement for high gloss and high-tech performance finishes.

DIFFUSION MEDIA CC-600 G

TECHNICAL DATA

| Product | Unit | CC-600 G |
|------------------------------------|------------------|------------|
| Air velocity | m/s | 0,25 - 0,5 |
| Initial pressure drop @ 0,25 m/s | Pa | 30 |
| Recommended final pressure drop | Pa | 450 |
| ISO A2 fine up to 300 Pa @ 0,5 m/s | g/m ² | 850 |
| Filter class per EN779:2012 | - | M5 |
| Filtrair migration class | - | R0 |

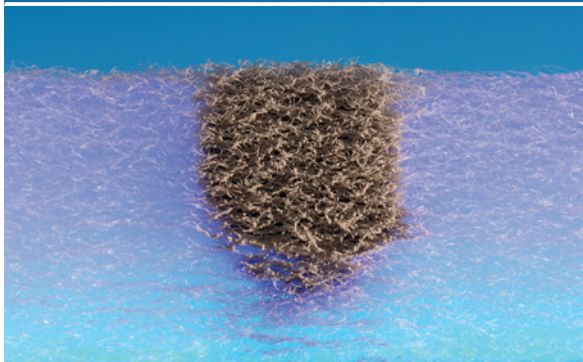
ISO 16890 TECHNICAL DATA

| | | |
|-------------------------------|---|-----------|
| Class To ISO 16890 @ 0,5 m/s | - | ePM10 60% |
| Particulate matter efficiency | | |
| ISO ePM _{1,0} | % | 8 |
| ISO ePM _{2,5} | % | 16 |
| ISO ePM ₁₀ | % | 61 |

APPLICATION PARAMETERS

| | |
|------------------------------------|--------------------------|
| Temperature Resistance | Up to 100°C |
| Temperature Resistance Short Peaks | Up to 180°C |
| Nominal Thickness | 20 mm |
| Relative Humidity | 100% |
| Standard Roll Sizes | 2 m x 20 m 1 m x 20 m |

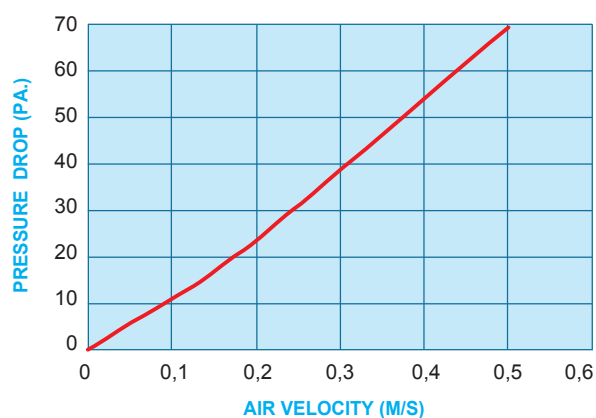
FILTRAIR MIGRATION TEST



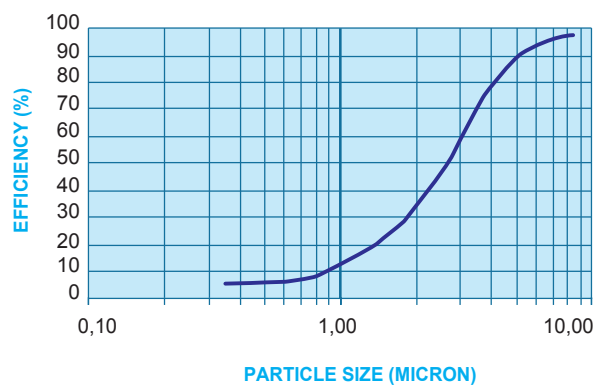
| Filtrair Migration Test Classes | No. of particles(*) |
|---------------------------------|---------------------|
| R0 | < 100 |
| R1 | < 1.000 |
| R2 | < 10.000 |
| R3 | < 100.000 |

(*) Number of particles larger than 10 microns per cubic meter counted on the clean air side

PRESSURE DROP vs AIR FLOW RATE



FRACTIONAL PARTICLE SIZE EFFICIENCY



All data are average indicative values with usual manufacturing and testing tolerances. We reserve the right to modify performance data without prior notice. Specific performance data will require our written confirmation. Filtrair® is the registered trade mark of Filtrair bv.



Filtrair®
Filtration Group®

ISO 9001 Registered Company

Filtrair B.V.

De Werf 16
8447 GE Heerenveen
The Netherlands
P. +31 (0) 513 - 626 355
E. marketing-filtrair@filtrationgroup.com
www.filtrair.com